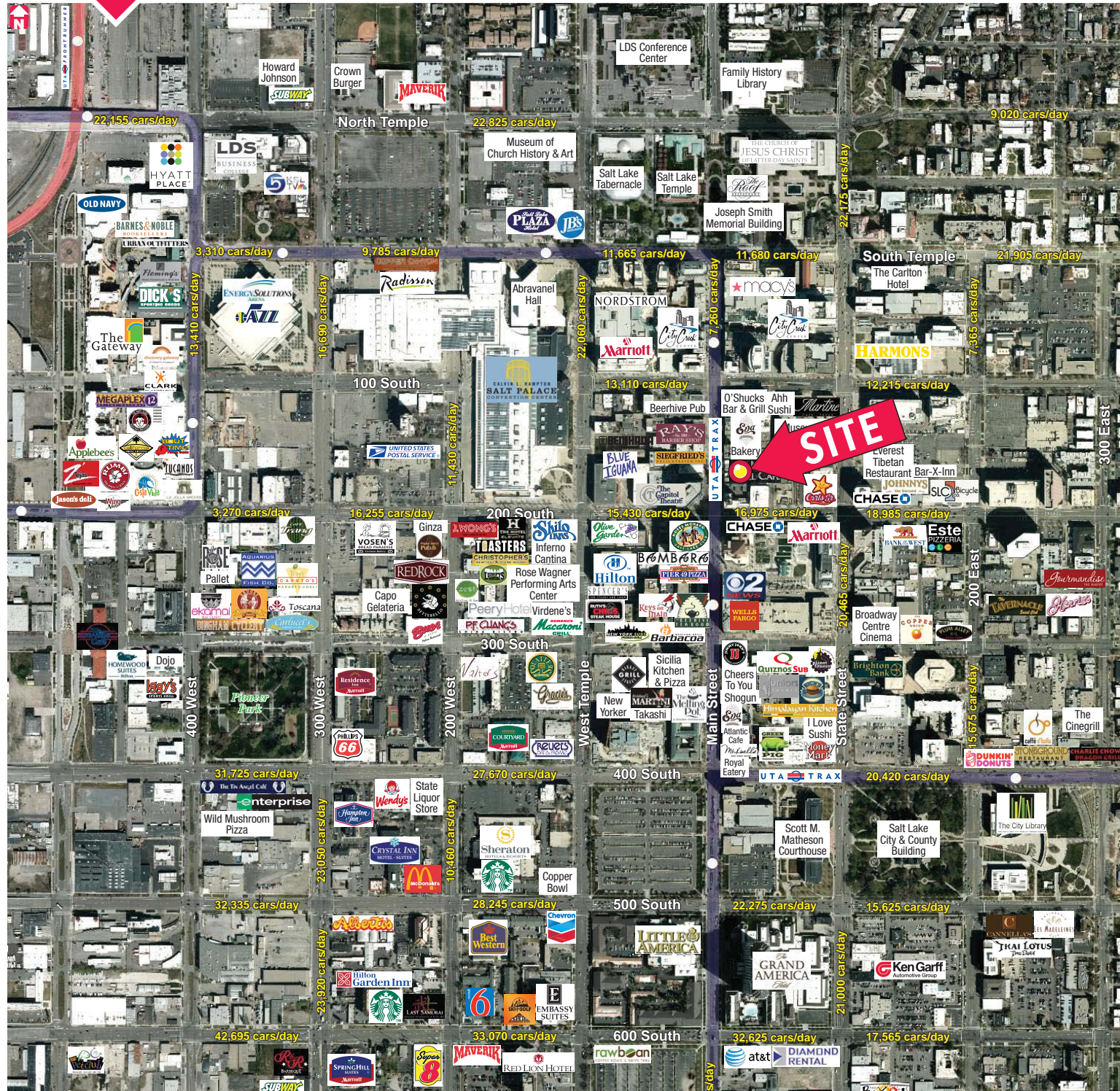
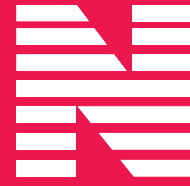


# HERALD BUILDING

165 South Main Street | Salt Lake City | Utah | 84111



# HERALD BUILDING

165 South Main Street | Salt Lake City | Utah | 84111



## FOR SUBLEASE

\$13.50/RSF, FS - FLOORS 2, 3 & 5  
\$9.00/RSF, FS - BASEMENT

### Property Highlights

- 19,297 Total SF Available
  - 2<sup>nd</sup> Floor: 6,115 SF
  - 3<sup>rd</sup> Floor: 5,542 SF
  - 5<sup>th</sup> Floor: 5,640 SF
  - Basement: 200–2,000 SF
- Amazing Location Within Walking Distance of City Creek Center and Numerous Restaurants, Hotels, and Retail Establishments
- Full Floor Space Available
- Trax Line Located Outside The Building
- Tenant Improvements Available
- Connected Parking Garage
- Sublease Expiration: December 31, 2019
- Additional Term Can be Obtained Direct with Landlord

### Contact

**Collin Perkins, MBA**  
direct 801.578.5575  
cperkins@ngacres.com

**Casey Mills, CCIM**  
direct 801.578.5556  
cmills@ngacres.com

**Derek Sawaya**  
direct 801.746.4730  
dsawaya@ngacres.com

**Newmark Grubb**  
ACRES

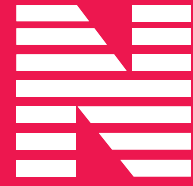
376 East 400 South, Suite 120 | Salt Lake City, Utah 84111  
Office 801.578.5555 | Fax 801.578.5500  
www.ngacres.com

**Newmark Grubb**  
ACRES

376 East 400 South, Suite 120 | Salt Lake City, Utah 84111  
Office 801.578.5555 | Fax 801.578.5500  
www.ngacres.com

# HERALD BUILDING

165 South Main Street | Salt Lake City | Utah | 84111



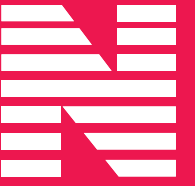
**Newmark Grubb**  
ACRES

376 East 400 South, Suite 120 | Salt Lake City, Utah 84111  
Office 801.578.5555 | Fax 801.578.5500  
[www.ngacres.com](http://www.ngacres.com)

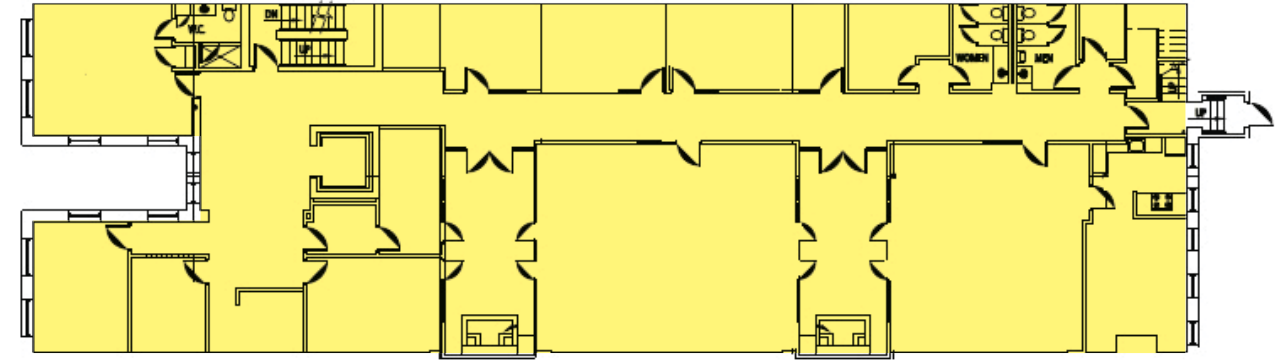
This statement with the information it contains is given with the understanding that all negotiations relating to the purchase, renting or leasing of the property described above shall be conducted through this office. The above information while not guaranteed has been secured from sources we believe to be reliable.

# HERALD BUILDING

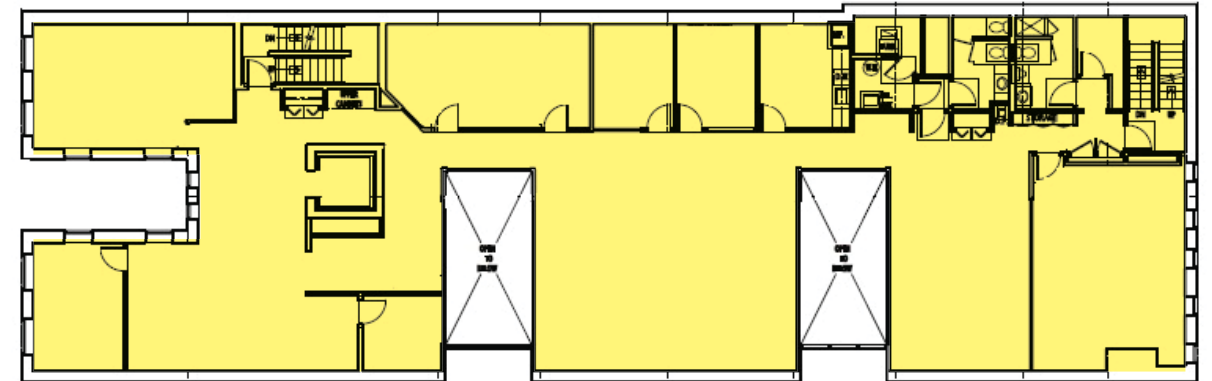
165 South Main Street | Salt Lake City | Utah | 84111



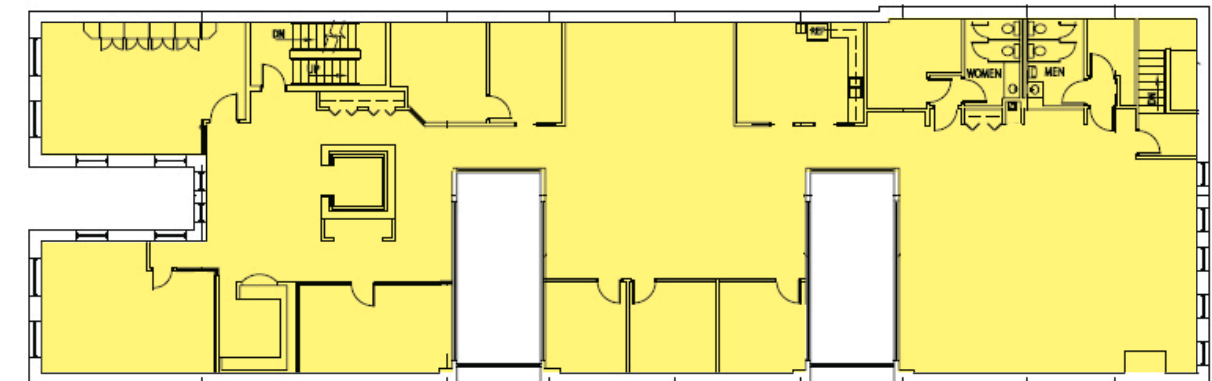
## 2<sup>ND</sup> FLOOR – 6,115 RSF



## 3<sup>RD</sup> FLOOR – 5,542 RSF



## 5<sup>TH</sup> FLOOR – 5,640 RSF



**Newmark Grubb**  
ACRES

376 East 400 South, Suite 120 | Salt Lake City, Utah 84111  
Office 801.578.5555 | Fax 801.578.5500  
[www.ngacres.com](http://www.ngacres.com)

This statement with the information it contains is given with the understanding that all negotiations relating to the purchase, renting or leasing of the property described above shall be conducted through this office. The above information while not guaranteed has been secured from sources we believe to be reliable.